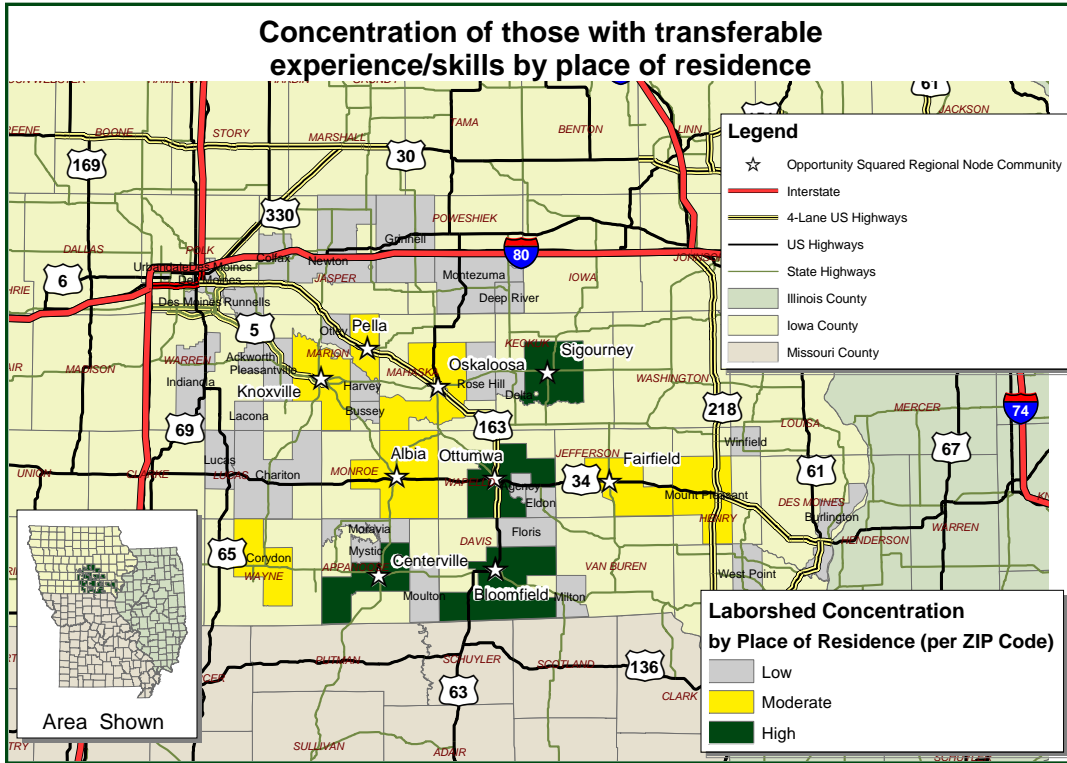


# Labor Characteristics

## Construction

### Opportunity<sup>2</sup> Region



Workers who have transferable experience/skills in the industry are currently commuting an average of 21 miles one way for work. Those who are willing to change/accept employment are willing to commute an average of 27 miles one way for the right employment opportunity.

#### Employment Status:

##### 79.2% Employed

- 20.0% of the employed are willing to change employment

##### 10.0% Unemployed

##### 3.3% Homemakers, Not Employed

##### 7.5% Retired

#### Education:

- 45.8% Education beyond high school
- 5.0% Associate degree
- 5.8% Trade certified
- 2.5% Vocational training
- 9.2% Undergraduate degree
- 0.8% Postgraduate degree

#### Flexibility in the Workplace:

(by percent of interest)

- Cross-training - 59.5%
- Varied shifts (2nd, 3rd, & split) - 27.0%
- Job sharing - 29.7%
- Job teams - 64.9%
- Seasonal work - 51.4%
- Temporary work - 51.4%

#### Other Facts:

- 52.7% paid an hourly wage
- 60.0% are/were employed full-time
- 26.7% are/were self-employed
- 9.6% hold two or more jobs
- Currently working an average of 45 hrs/week

#### Current Benefits:

- Health/medical insurance - 87.7%
- Pension/retirement/401K - 52.3%
- Paid vacation - 38.5%
- Dental coverage - 36.9%
- Vision coverage - 21.5%
- Paid holidays - 13.8%
- Life insurance - 12.3%
- Prescription drug coverage - 10.8%
- Paid sick leave - 9.2%
- Disability insurance - 6.2%

#### Desired Benefits:

(by percent of interest)

- Health/medical insurance - 87.5%
- Pension/retirement/401K - 43.8%
- Paid vacation - 21.9%
- Dental coverage - 18.8%
- Vision coverage - 18.8%
- Paid holidays - 12.5%
- Paid sick leave - 9.4%
- Life insurance - 9.4%

#### Top Advertising Media:

(for those seeking employment opportunities)

- Local/Regional Newspapers
  - The Des Moines Register
  - Ottumwa Courier
- Local Iowa Workforce Development Centers
- Networking through family, friends, acquaintances
- The Internet
  - [www.southerniowahelpwanted.com](http://www.southerniowahelpwanted.com)

#### Potential Available Labor Business Operations:

- Managers - 5,302
- Cost Estimators - 164
- Sales - 175
- Accounting Clerks - 860
- Dispatchers - 161
- Secretaries - 328

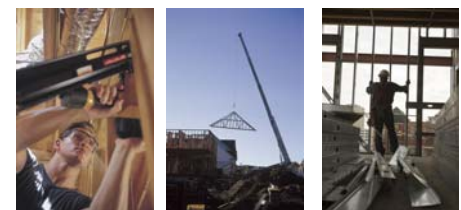
#### Production:

- Supervisors - 1,208
- Electrical Engineers - 350
- Drafters - 159
- Industrial & Commercial Designers - 162
- Cleaners - 172
- Grounds Maintenance - 173
- Brick & Block Masons - 344
- Carpenters - 2,067
- Concrete Finishers - 352
- Construction Laborers - 696
- Construction Equipment Operators - 160
- Drywall & Ceiling Installers - 158
- Electricians - 1,883
- Painters - 166
- Plumbers & Pipe Layers - 333
- Roofers - 158
- Construction Inspectors - 162
- Construction Workers - 510
- Explosive & Ordnance Handlers - 170
- Mechanics - 510
- Heating, A/C, & Refrigeration Mechanics - 163
- Maintenance Workers - 167
- Millwrights - 148
- Electrical Power Line Installers - 153
- Multiple Machine Operators - 171
- Mixing Machine Operators - 182
- Production Workers - 1,053

#### Material Movers:

- Truck Drivers - 510
- Boat Operators - 161
- Crane Operators - 148
- Bridge & Lock Operators - 137

An estimated total of **19,876** people in the Laborshed area



#### Underemployment

Total Underemployment - 2.5%

- Low hours - 1.7%
- Mismatch of skills - 0.8%
- Low income - 1.7%

IWD only counts individuals once when estimating Total Underemployment.

Information was compiled by Iowa Workforce Development using data released 2008.

Occupation	Occupational Code	Mean Wage	Entry Wage	Experienced Wage	Median Wage
Automotive Service Technicians and Mechanics	49-3023	\$ 14.91	\$ 10.05	\$ 17.34	\$ 13.81
Brickmasons and Blockmasons	47-2021	\$ 21.35	\$ 19.54	\$ 22.25	\$ 21.68
Bus and Truck Mechanics and Diesel Engine Specialists	49-3031	\$ 15.52	\$ 12.16	\$ 17.19	\$ 15.38
Carpenters	47-2031	\$ 13.83	\$ 11.14	\$ 15.16	\$ 13.71
Cement Masons and Concrete Finishers	47-2051	\$ 15.18	\$ 12.65	\$ 16.43	\$ 14.33
Computer, Automated Teller, and Office Machine Repairers	49-2011	\$ 14.20	\$ 13.88	\$ 14.37	\$ 14.20
Construction and Building Inspectors	47-4011	\$ 14.77	\$ 8.91	\$ 17.70	\$ 16.12
Construction Laborers	47-2061	\$ 14.14	\$ 9.42	\$ 16.49	\$ 14.55
Construction Managers	11-9021	\$ 23.20	\$ 22.35	\$ 23.61	\$ 22.88
Electrical and Electronics Repairers, Commercial and Industrial Equipment	49-2094	\$ 20.01	\$ 19.93	\$ 20.04	\$ 20.23
Electricians	47-2111	\$ 21.23	\$ 17.17	\$ 23.28	\$ 21.41
Excavating and Loading Machine and Dragline Operators	53-7032	\$ 13.76	\$ 11.70	\$ 14.80	\$ 14.02
First-Line Supervisors/Managers of Construction Trades and Extraction Workers	47-1011	\$ 23.82	\$ 17.02	\$ 27.21	\$ 24.34
First-Line Supervisors/Managers of Mechanics, Installers, and Repairers	49-1011	\$ 23.87	\$ 15.78	\$ 27.90	\$ 25.28
Heating, Air Conditioning, and Refrigeration Mechanics and Installers	49-9021	\$ 12.37	\$ 9.05	\$ 14.03	\$ 11.49
Helpers, Construction Trades, All Other	47-3019	\$ 11.19	\$ 8.74	\$ 12.42	\$ 9.72
Helpers--Installation, Maintenance, and Repair Workers	49-9098	\$ 13.24	\$ 10.29	\$ 14.71	\$ 11.01
Highway Maintenance Workers	47-4051	\$ 16.51	\$ 14.15	\$ 17.71	\$ 16.73
Industrial Machinery Mechanics	49-9041	\$ 17.68	\$ 15.10	\$ 18.97	\$ 17.44
Installation, Maintenance, and Repair Workers, All Other	49-9099	\$ 13.67	\$ 9.85	\$ 15.58	\$ 14.27
Maintenance and Repair Workers, General	49-9042	\$ 15.47	\$ 10.92	\$ 17.74	\$ 15.58
Maintenance Workers, Machinery	49-9043	\$ 14.88	\$ 12.04	\$ 16.30	\$ 14.35
Mobile Heavy Equipment Mechanics, Except Engines	49-3042	\$ 16.95	\$ 15.88	\$ 17.49	\$ 16.92
Operating Engineers and Other Construction Equipment Operators	47-2073	\$ 17.13	\$ 15.07	\$ 18.15	\$ 17.19
Roofers	47-2181	\$ 10.70	\$ 9.34	\$ 11.38	\$ 10.51
Septic Tank Servicers and Sewer Pipe Cleaners	47-4071	\$ 14.25	\$ 14.13	\$ 14.31	\$ 14.36
Sheet Metal Workers	47-2211	\$ 16.73	\$ 14.17	\$ 18.01	\$ 17.43
Telecommunications Equipment Installers and Repairers, Except Line Installers	49-2022	\$ 22.81	\$ 20.13	\$ 24.15	\$ 23.01
Telecommunications Line Installers and Repairers	49-9052	\$ 23.38	\$ 19.85	\$ 25.15	\$ 24.02
Truck Drivers, Heavy and Tractor-Trailer	53-3032	\$ 16.57	\$ 9.16	\$ 20.29	\$ 15.11
Truck Drivers, Light or Delivery Services	53-3033	\$ 13.62	\$ 6.79	\$ 17.03	\$ 11.07

This Iowa Wage Survey for the Iowa Workforce Development (IWD) Region 15 service area was produced by the Workforce Data & Business Development Bureau to provide communities local information on wages by occupation. This publication was developed specifically for the IWD Region 15. The source of the wage and employment data is the 2007 Iowa Wage Survey. Additional data from the Iowa Wage Survey for individual counties, Iowa Workforce Development regions, and by industry statewide are available on the Iowa Workforce Development web site located at [www.iowaworkforce.org](http://www.iowaworkforce.org).

**For more information regarding the Opportunity<sup>2</sup> Regional Laborshed Analysis, contact:**

Opportunity<sup>2</sup>  
 PO Box 1110  
 Ottumwa, IA 52501  
 Phone: (641) 684-6551  
 Fax: (641) 684-4894  
 Email: [efoudree@indianhills.edu](mailto:efoudree@indianhills.edu)  
[www.area15rpc.com](http://www.area15rpc.com)

